

You are receiving this email from Earth Angel because you purchased a product/service or subscribed on our website. To be removed from this email list, click on reply and note unsubscribe in the message body of the email. If you're having trouble viewing this email, visit <http://www.earthangel.co.nz/earth-angels-e-newsletter/>



[www.earthangel.co.nz](http://www.earthangel.co.nz)

**Take action towards a sustainable future  
New Zealand's sustainability product and book webstore**

## Earth Angel turned 2 in March 2009

Earth Angel is offering a special second birthday discount of 10% on all products until the end of April 2009 so get shopping!

## WWF EARTH HOUR







**8.30pm - 9.30pm Saturday 28<sup>th</sup> March**

**[www.earthhour.org/newzealand](http://www.earthhour.org/newzealand)**

Earth Hour is being held in New Zealand for the second time this Saturday, 28 March between 8.30pm and 9.30pm. Earth Hour was first introduced in 2007 in Sydney and was celebrated by 28 partner cities around the world in 2008 including Christchurch. Over 50 million people took part in this world wide last year which is an astronomical amount of support. Earth Hour asks businesses and homes to switch their lights off for one full hour as a show of their support and commitment to fighting climate change. We're in, hope you guys are too!

Your family or flat can participate in Earth Hour through:

- Hosting a candle lit dinner or fun night with family and friends
- Turning off your lights (and perhaps the TV) during 8.30pm - 9.30pm on Saturday
- Replacing your incandescent lights with Compact Fluorescent Lights (CFL) for permanent energy savings
- Recycling your old CFL through purchasing InterWaste CFL Recycling Box available through Earth Angel.
- Registering your Earth Hour planned participation at [www.earthhour.org/newzealand](http://www.earthhour.org/newzealand) and enter the draw to **win a Toyota Prius**
- Replacing your electrical connections with an IntelliSwitch for the heated towel rail, light switches or plugs for appliances.

			
<b>CFL Recycling Box \$12.95</b>	<b>IntelliSwitch Fixed Wire \$89.95</b>	<b>IntelliSwitch Single Switch \$79.95</b>	<b>IntelliSwitch Single Plug \$89.95</b>

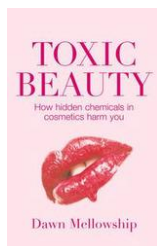
# TOXIC BEAUTY

## As shown on Campbell Live, TV3

John Campbell ran an interesting segment in his show on Monday 16<sup>th</sup> March interviewing author Dawn Mellowship on her new book Toxic Beauty. Her book highlights the incredible amount of chemicals in our everyday items: makeup, shampoo, body wash, hand creams and deodorants to name a few. Among the list of chemical nasties were Parabens, Sodium Laurel Sulphates, and various other petrochemical derivatives that have been found to have carcinogenic properties.

If you didn't see the show here is the link: <http://www.3news.co.nz/Bubble-bath-may-pose-a-danger-to-our-kids/tabid/367/articleID/95588/cat/84/Default.aspx> .

At Earth Angel we have been very conscious of this for a long time having first introduced you to the Real Deal Hurt Creme that contains no chemicals or oestrogen mimicking properties. We would now like to introduce our beautiful Handmade Herbals range sourced from Raceview Products, Central Otago. These beautiful crèmes and balms are made from 100% natural ingredients and are all available from our website.



Book - Toxic Beauty

**\$30**



Real Deal Hurt Crème -  
100 gm

**\$15**



Raceview Facecare Pack

**\$33**



Raceview Mint Fresh  
Lip Balm

**\$8**

We are proud to be able to offer an alternative to chemical laden products - please take a look at our range and recommend to your family and friends - we are offering a special second birthday discount of 10% on all products until the end of April 2009 so get shopping!

Email [info@earthangel.co.nz](mailto:info@earthangel.co.nz) to arrange for your order with the 10% discount.

Let's all help make a difference!

Best wishes

The Earth Angel Team  
[www.earthangel.co.nz](http://www.earthangel.co.nz)  
[info@earthangel.co.nz](mailto:info@earthangel.co.nz)  
Tel 09 834 0699 or 021 148 6888